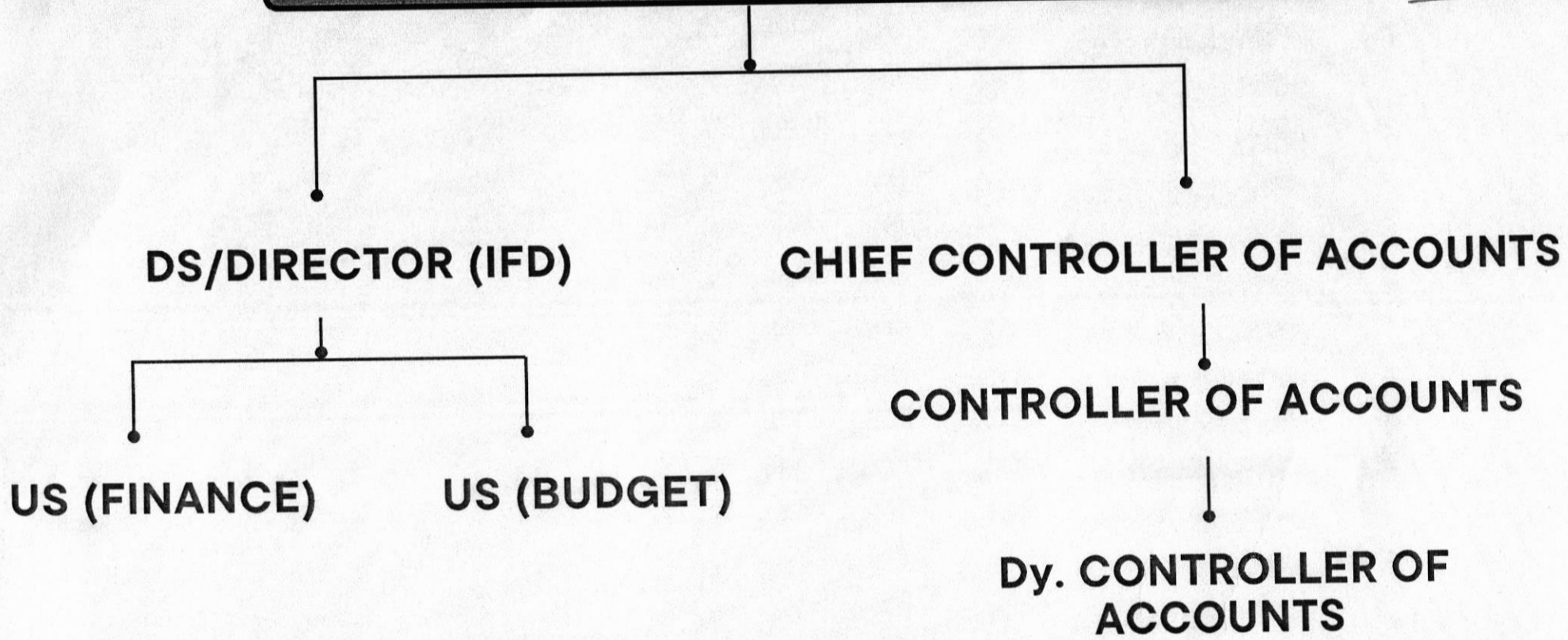


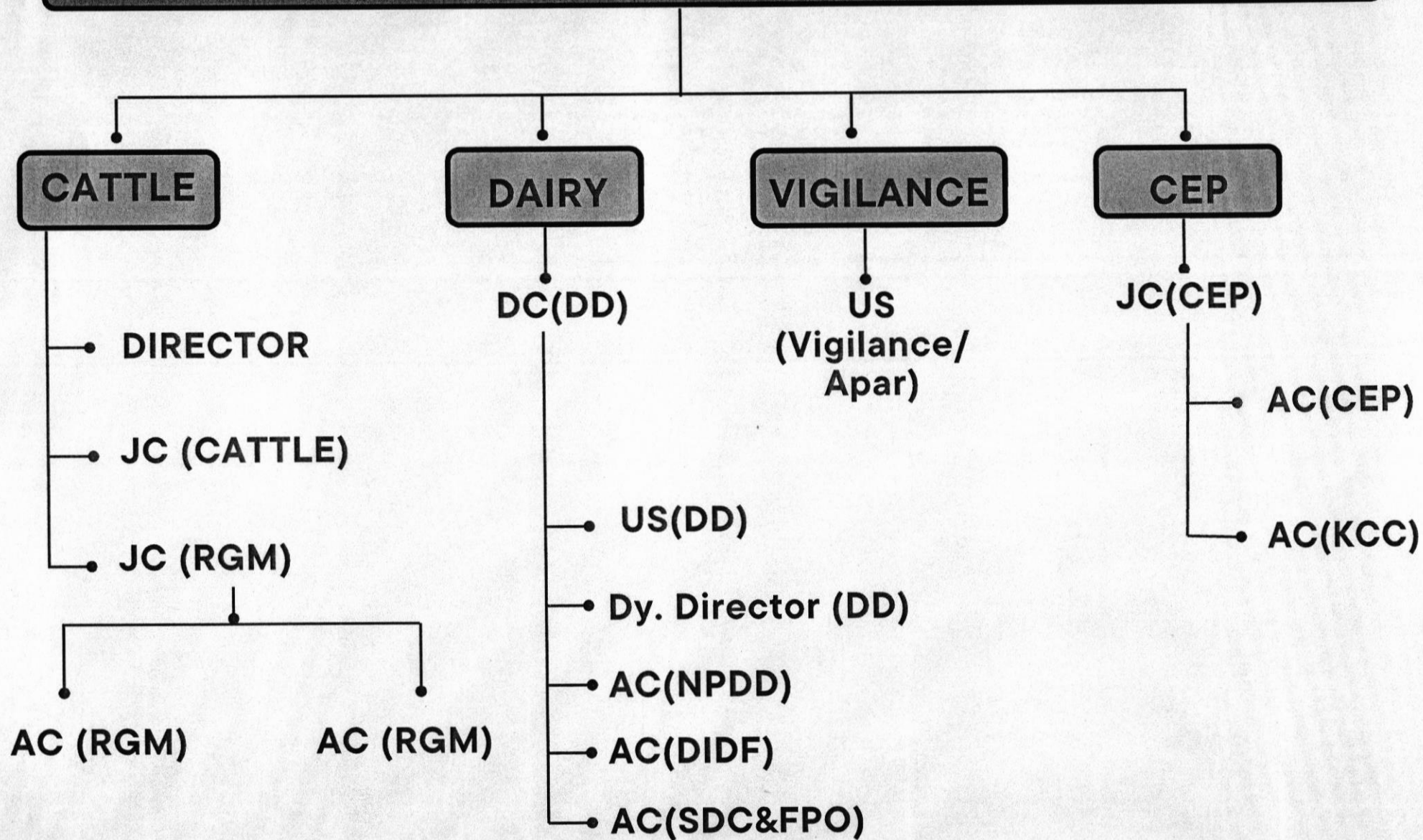
OFFICE OF AS & FA AND DIVISION RELATED

Annexure - F

27



DIVISIONS WITH ADDITIONAL SECRETARY (MS. VARSHA JOSHI)



AUTONOMOUS BODY AND SUBORDINATE OFFICES ATTACH WITH AS (VJ)

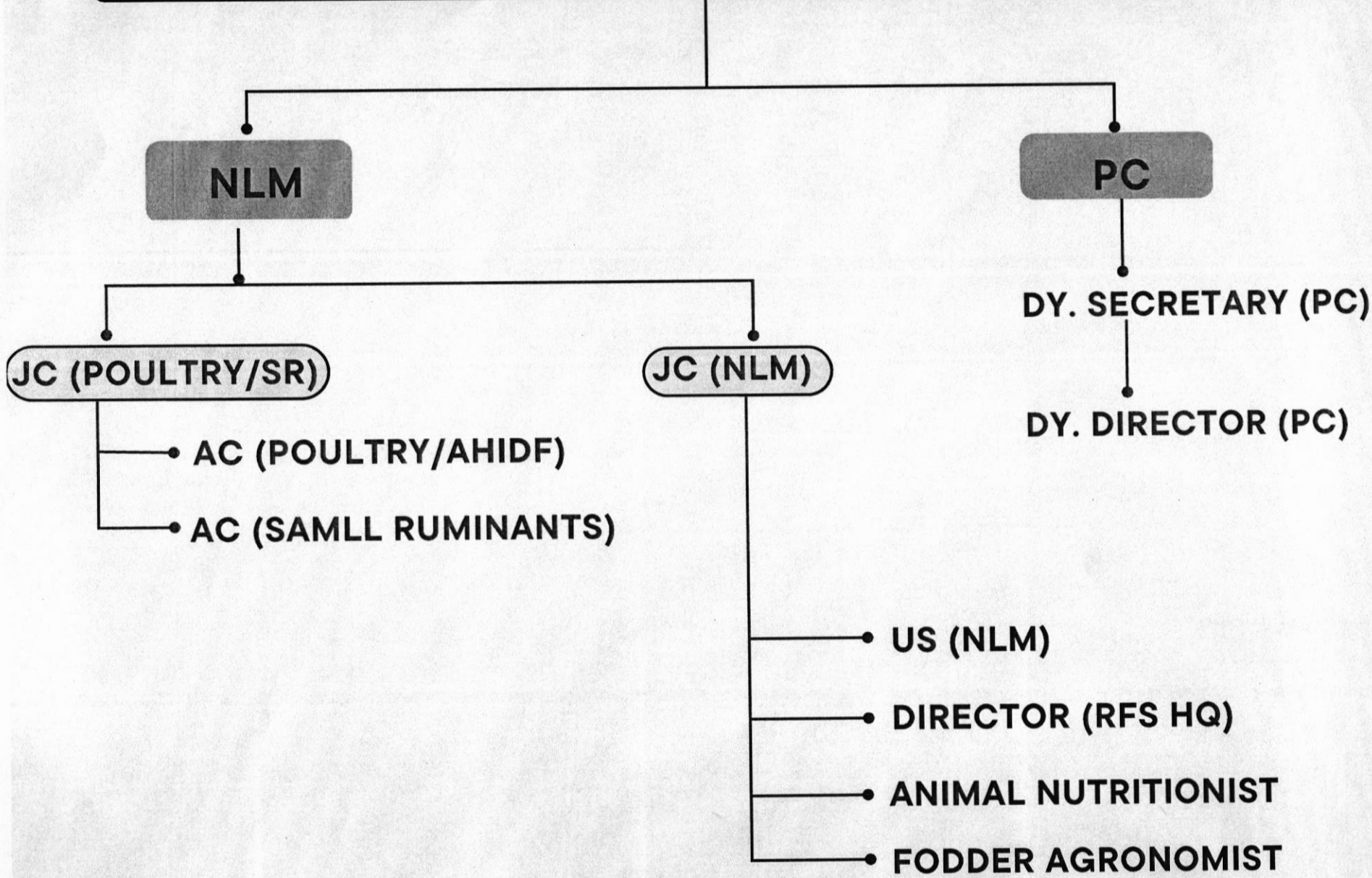
26

SUBORDINATE OFFICES

NATIONAL DAIRY DEVELOPEMENT BOARD

CHRS, Rohtak (Haryana).
CHRS, Ajmer.
CHRS, Ahmedabad.
CHRS, Santhapat, Ongole, District Prakasam (A.P.)
CCBF, Dhamrod, District Surat, Gujarat.
CCBF, Andesh Nagar, District Lakhimpur, (UP).
CCBF, Similiguda, Sunabada (Koraput), Odisha.
CCBF, Suratgarh (Rajasthan).
CCBF, Chiplima, Basantpur, District Sambalpur, (Odisha).
CCBF, Avadi, Alamadhi (Chennai).
CCBF, Hessarghatta, Bengaluru North.
CFS & PTI, Hessarghatta, Bengaluru North.
DMS, West Patel Nagar, New Delhi.

DIVISIONS WITH JOINT SECRETARY (DR. O.P CHAUDHARY)



AUTONOMOUS BODY AND SUBORDINATE OFFICES ATTACH WITH JS (OPC)

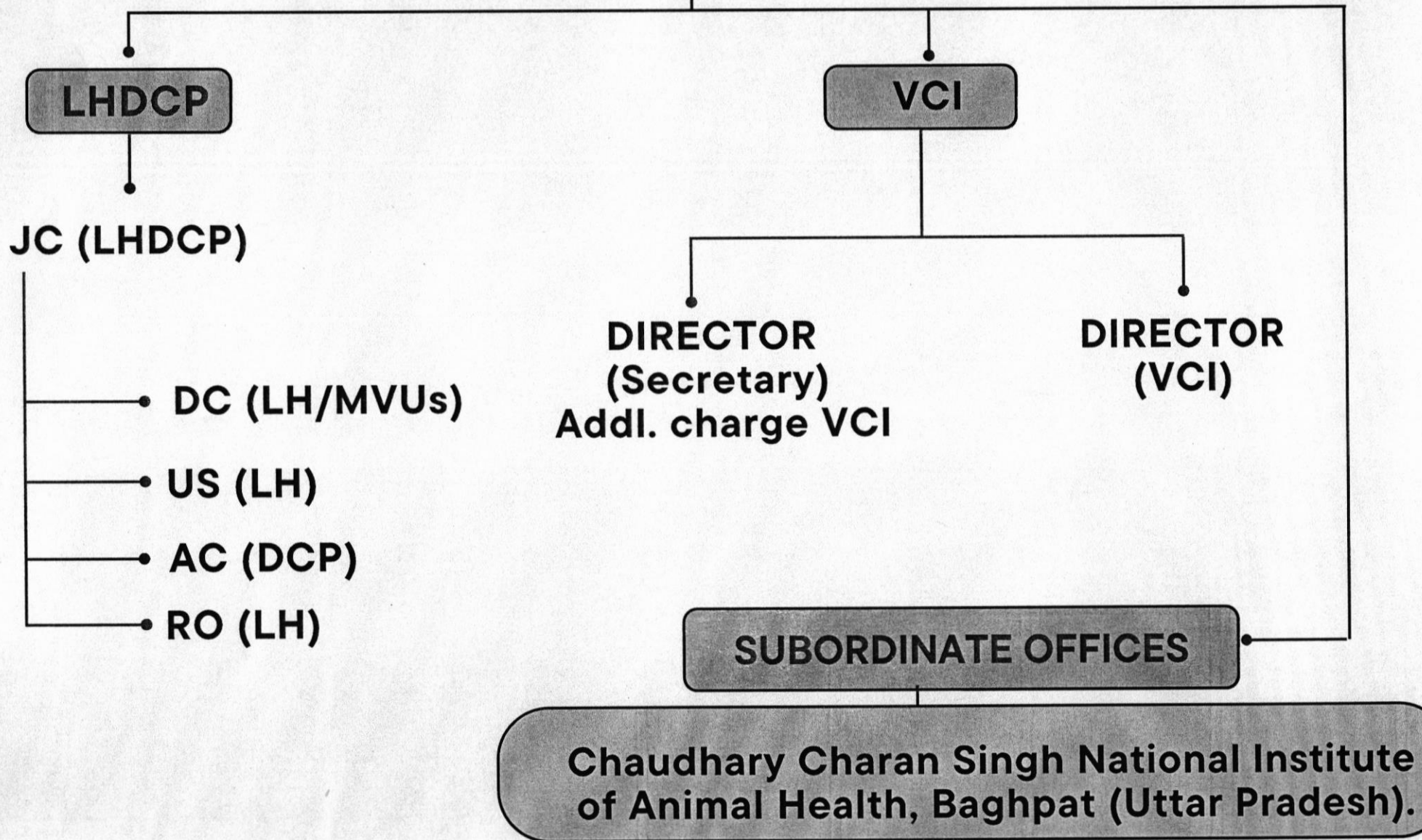
SUBORDINATE OFFICES

ANIMAL WELFARE BOARD OF INDIA

CSBF, Hissar (Haryana).
CPDO, Southern Region, Hessarghatta, Bengaluru.
CPDO, Eastern Region, Bhubaneswar (Odisha).
CPDO, Western Region, Aarey Milk Colony, Mumbai.
CPDO, Northern Region, Industrial Area, Chandigarh.
CPPTC, Gurgaon (Haryana).
RFS, Kalyani, District Nadia, (West Bengal).
RFS, Jammu (J&K).
RFS, Suratgarh (Rajasthan).
RFS, Hisar (Haryana).
RFS, Dhamrod (Gujarat).
RFS, Avadi, Alamadhi, Chennai (Tamil Nadu).
RFS, Hyderabad.
RFS, Hessarghatta, Bengaluru North.

DIVISIONS & SUBORDINATE OFFICES WITH JOINT SECRETARY (SH. UPAMANYU BASU)

(MS. SARITA CHAUHAN)



CONFIDENTIAL

NO (M)

NO (M)

NO (M)

NO (M)

NO (M)

NO (M)

DIRECTOR (M)

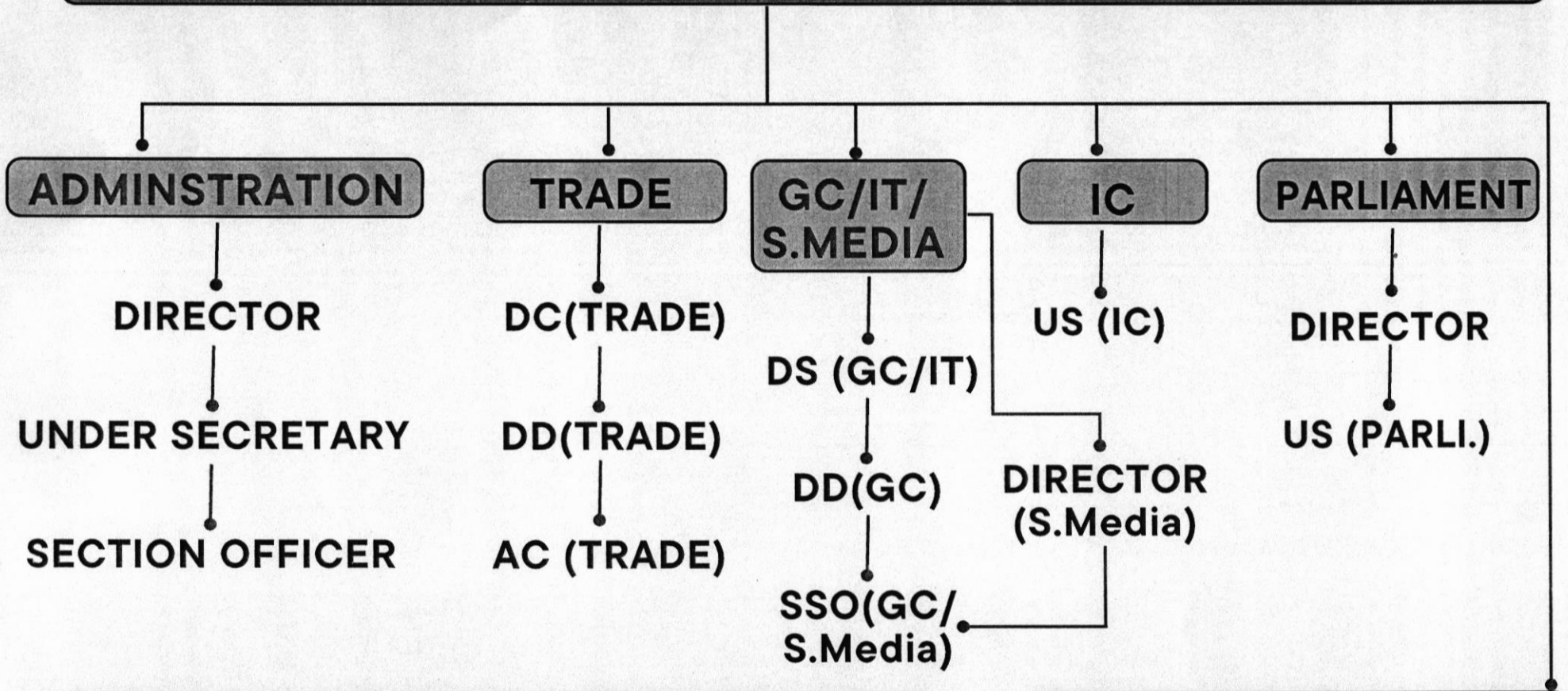
DIRECTOR (M)

(M)

CONFIDENTIAL

DIVISIONS & SUBORDINATE OFFICES WITH JOINT SECRETARY (SH. G.N SINGH)

30



- AQCS, Kapashera Village, New Delhi.
- AQCS, Pallikarni Village, Chennai.
- AQCS, Gopalpur, District 24 Parganas (West Bengal).
- AQCS, Mumbai.
- AQCS, Hyderabad.
- AQCS, Bengaluru.

SUBORDINATE OFFICES

DIVISION WITH ADVISOR (SH. SUMEDH SOPAN NAGRARE)

ANIMAL HUSBANDRY STATISTICS

DIRECTOR

**ASISTANT
DIRECTOR**

**ASISTANT
DIRECTOR**

**ASISTANT
DIRECTOR**