



भारत 2023 INDIA

वैश्विक कुटुम्बकम्

ONE EARTH • ONE FAMILY • ONE FUTURE

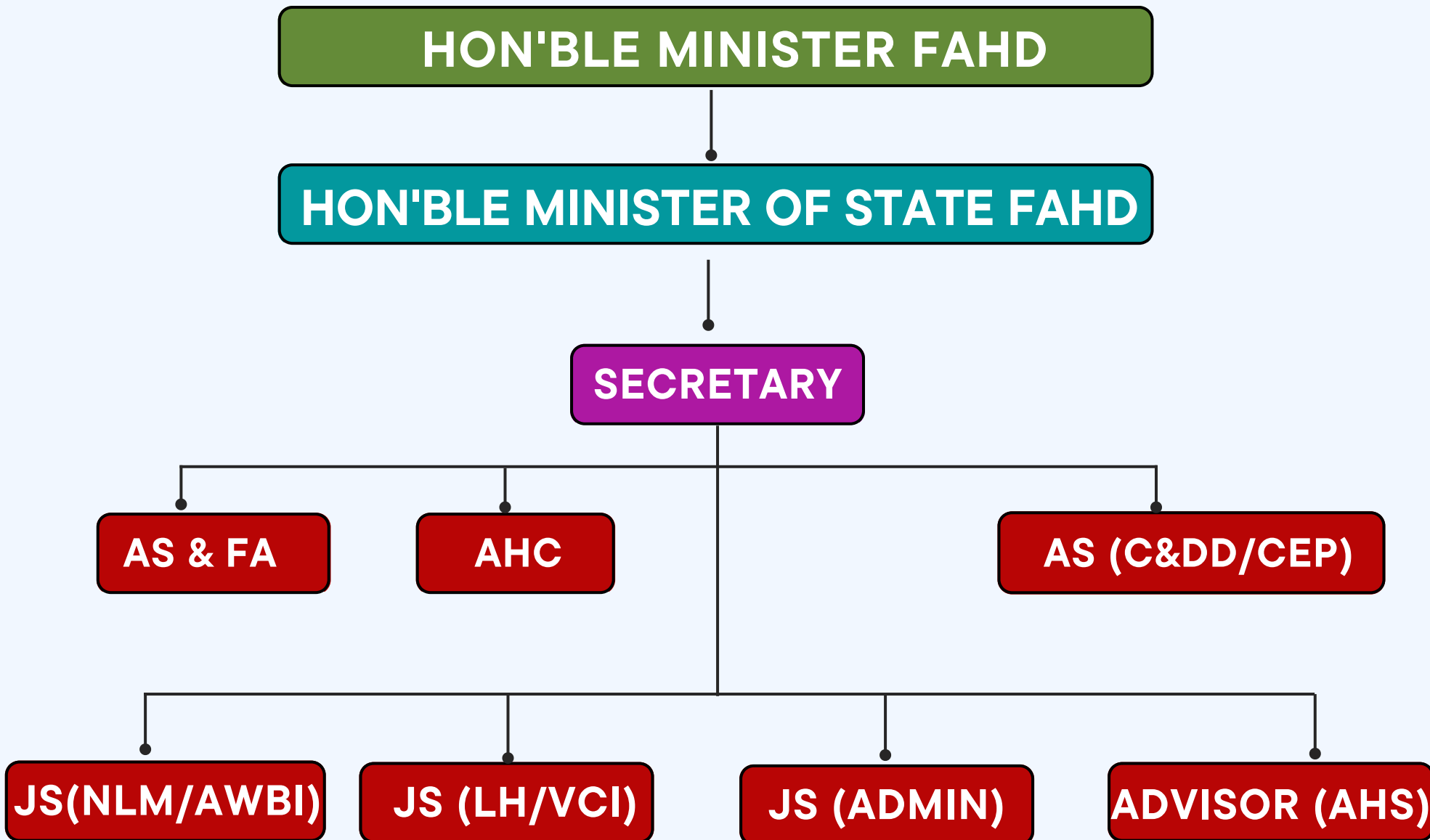


DEPARTMENT OF ANIMAL HUSBANDRY AND DAIRYING

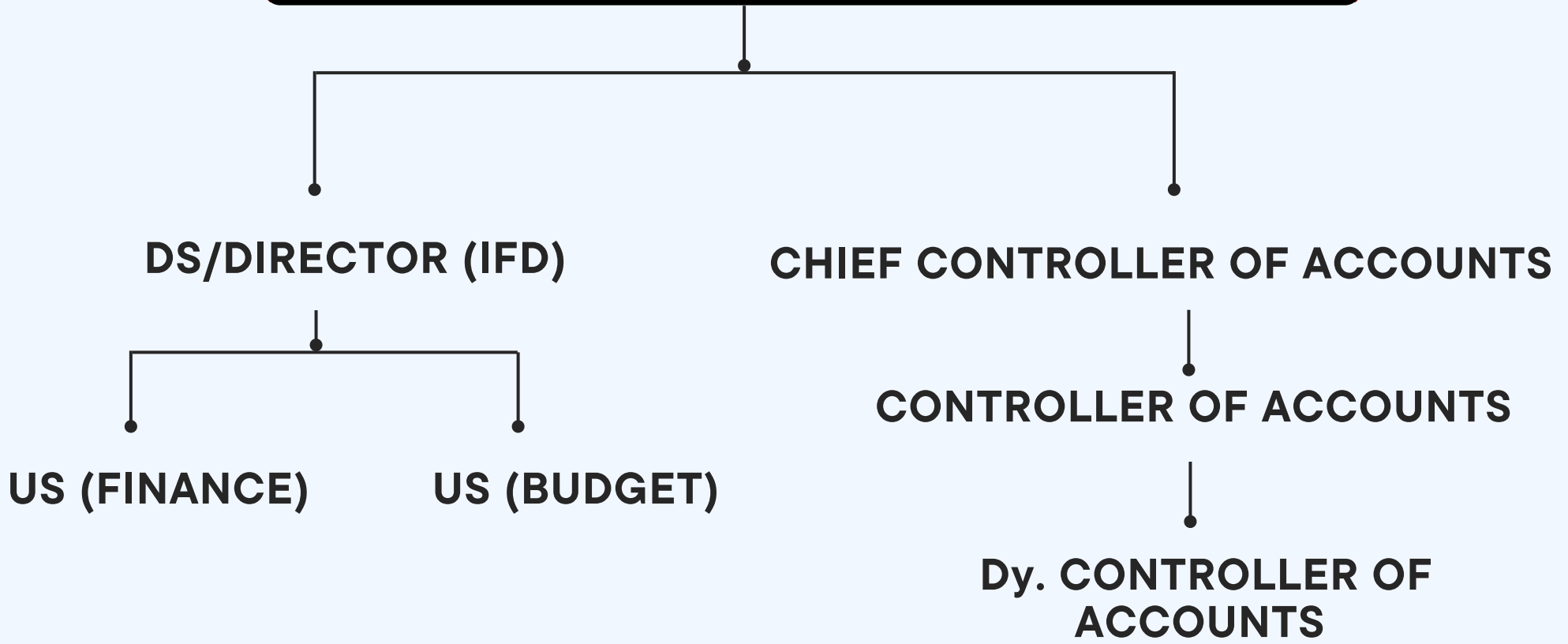


आज़ादी का
अमृत महोत्सव

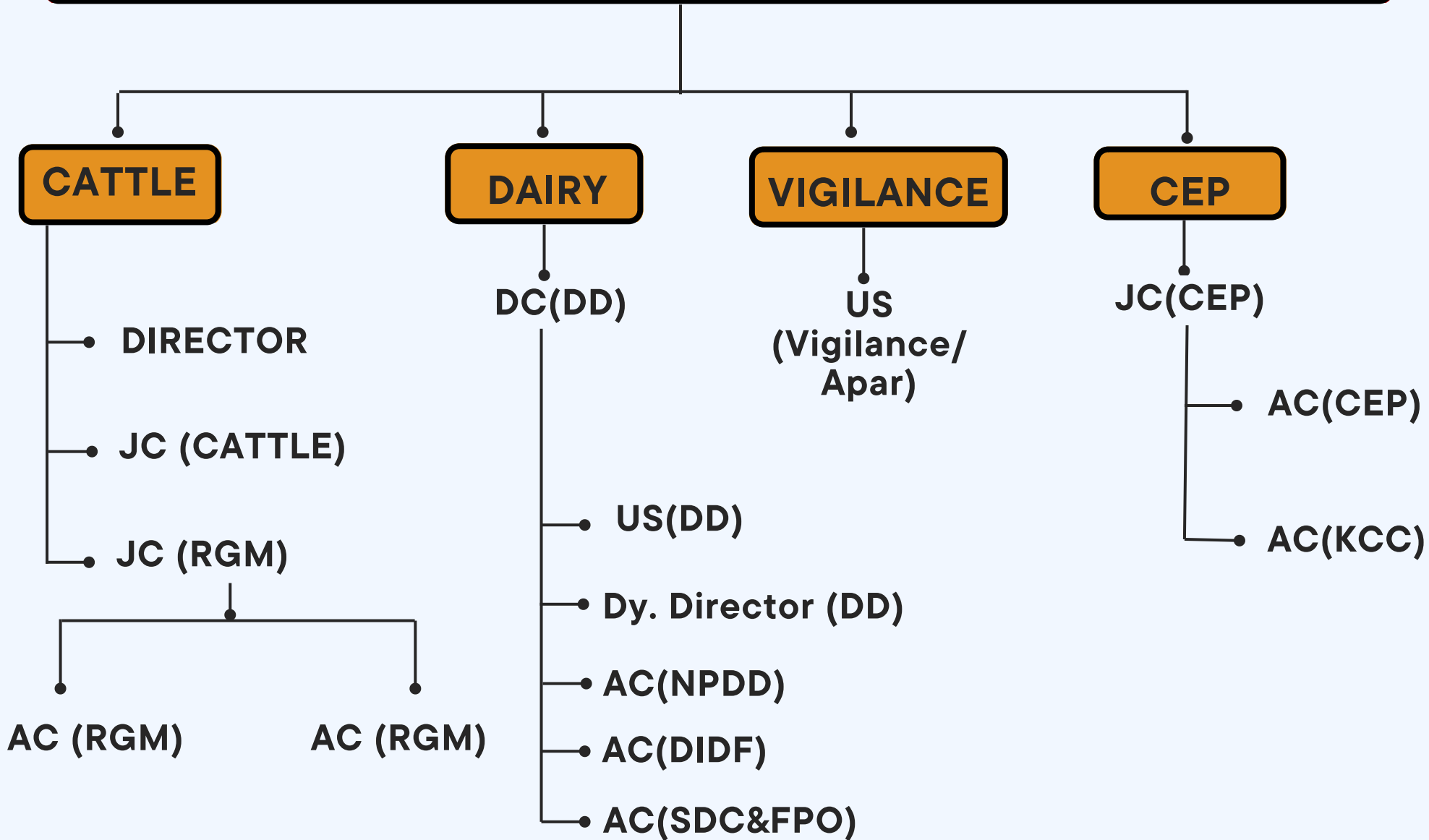
Organization Structure



OFFICE OF AS & FA AND DIVISION RELATED



DIVISIONS WITH ADDITIONAL SECRETARY (MS. VARSHA JOSHI)



AUTONOMOUS BODY AND SUBORDINATE OFFICES ATTACH WITH AS (VJ)

SUBORDINATE OFFICES

NATIONAL DAIRY DEVELOPEMENT BOARD

**CHRS, Rohtak (Haryana).
CHRS, Ajmer.
CHRS, Ahmedabad.
CHRS, Santhapat, Ongole, District Prakasam (A.P.)
CCBF, Dhamrod, District Surat, Gujarat.
CCBF, Andesh Nagar, District Lakhimpur, (UP).
CCBF, Similiguda, Sunabada (Koraput), Odisha.
CCBF, Suratgarh (Rajasthan).
CCBF, Chiplima, Basantpur, District Sambalpur, (Odisha).
CCBF, Avadi, Alamadhi (Chennai).
CCBF, Hessarghatta, Bengaluru North.
CFS & PTI, Hessarghatta, Bengaluru North.
DMS, West Patel Nagar, New Delhi.**

DIVISIONS WITH JOINT SECRETARY (DR. O.P CHAUDHARY)

NLM

PC

JC (POULTRY/SR)

JC (NLM)

DY. SECRETARY (PC)

DY. DIRECTOR (PC)

• **AC (POULTRY/AHIDF)**

• **AC (SMALL RUMINANTS)**

• **US (NLM)**

• **DIRECTOR (RFS HQ)**

• **ANIMAL NUTRITIONIST**

• **FODDER AGRONOMIST**

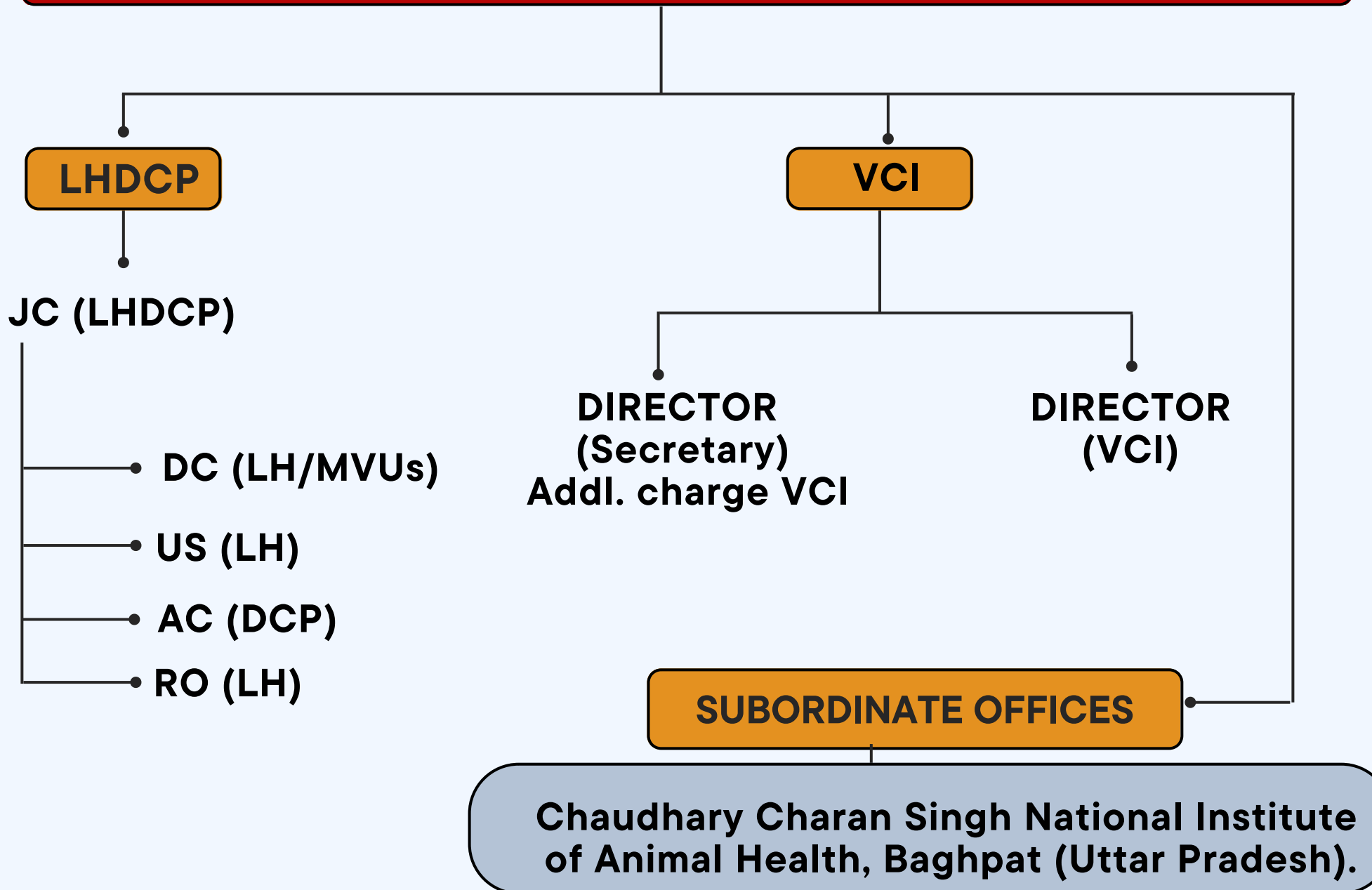
AUTONOMOUS BODY AND SUBORDINATE OFFICES ATTACH WITH JS (OPC)

SUBORDINATE OFFICES

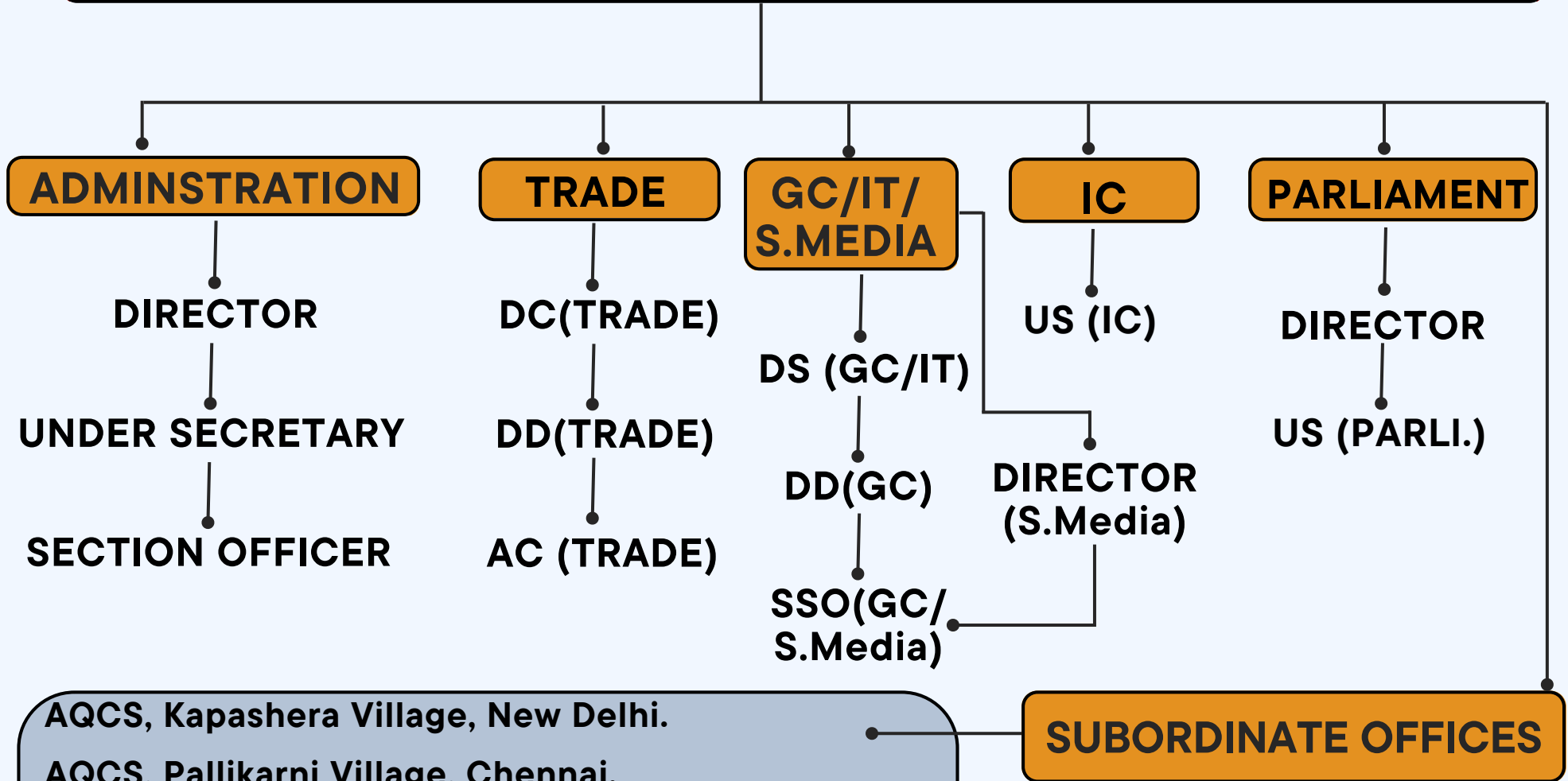
ANIMAL WELFARE BOARD OF INDIA

CSBF, Hissar (Haryana).
CPDO, Southern Region, Hessarghatta, Bengaluru.
CPDO, Eastern Region, Bhubaneswar (Odisha).
CPDO, Western Region, Aarey Milk Colony, Mumbai.
CPDO, Northern Region, Industrial Area, Chandigarh.
CPPTC, Gurgaon (Haryana).
RFS, Kalyani, District Nadia, (West Bengal).
RFS, Jammu (J&K).
RFS, Suratgarh (Rajasthan).
RFS, Hisar (Haryana).
RFS, Dhamrod (Gujarat).
RFS, Avadi, Alamadhi, Chennai (Tamil Nadu).
RFS, Hyderabad.
RFS, Hessarghatta, Bengaluru North.

DIVISIONS & SUBORDINATE OFFICES WITH JOINT SECRETARY (SH. UPAMANYU BASU)



DIVISIONS & SUBORDINATE OFFICES WITH JOINT SECRETARY (SH. G.N SINGH)



DIVISION WITH ADVISOR (SH. SUMEDH SOPAN NAGRARE)

ANIMAL HUSBANDRY STATISTICS

DIRECTOR

**ASISTANT
DIRECTOR**

**ASISTANT
DIRECTOR**

**ASISTANT
DIRECTOR**